

TO ALL OPERATING PERSONNEL

Measures to combat and contain the spread of the Covid-19 virus

- TRADE FAIR DISTRICT -

please remember:

1. the obligation to remain at home if you have a temperature (over 37.5°) or other flu symptoms, and to call your family doctor and the health authorities;
2. awareness and the acceptance of the fact that access is subject to the checking of body temperature for the sole purpose of the prevention of the spread of COVID-19;
3. awareness and the acceptance of the fact of being unable to enter or remain in the trade fair district area and of having to promptly declare – even subsequent to entry – in the event of the occurrence of dangerous factors (flu symptoms, a temperature, arrival from areas of risk or contact with persons positive to the virus in the previous 14 days, etc.), in which case the trade fair authorities instruct personnel to inform their family doctor and the Health Authorities, and to remain at home;
4. the commitment to promptly and responsibly inform the Healthcare Facility of the presence of any flu symptoms arising after entry to the district, taking care to remain at a suitable distance from the persons present;
5. the obligation to request a check-up by the occupational health physician if you intend to enter after infection from SARS-CoV-2 which has required hospital admission;
6. the commitment to comply with all the provisions of the trade fair authorities and the organiser of the Event in accessing the district (in particular, to maintain a safety distance when entering/exiting and in shared areas, to comply with the hand hygiene regulations and to adopt correct behaviour regarding hygiene in general);
7. the commitment to comply with the anti-contagion measures drawn up by the organiser, in particular: cleaning and disinfecting of equipment and workstations under your responsibility before and after use, of all surfaces subject to contact, keyboards, mouse devices, screens, etc.; frequent cleaning and disinfecting of hands using the cleansing products made available by the organiser, to be used every time access is made to the toilets; use of a facemask in the areas inside the district.

Marco Momoli

C.E.O.

MODENAFIERE S.R.L.

How to rub your hands with alcohol-based solution.

USE THE ALCOHOL-BASED SOLUTION FOR HAND HYGIENE
WASH YOUR HANDS WITH SOAP AND WATER ONLY IF VISIBLY DIRTY!

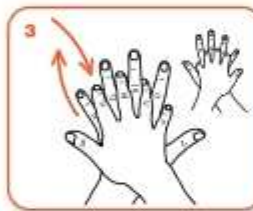
The procedure takes 20–30 seconds



Pure a quantity of solution onto your palm sufficient to cover the entire surface area of the hands.



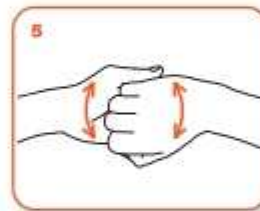
Rub the palms of your hands one against the other.



Rub the palm of the right hand over the back of the left hand, intertwining the fingers with each other and vice versa.



Rub palm against palm, intertwining the fingers with each other



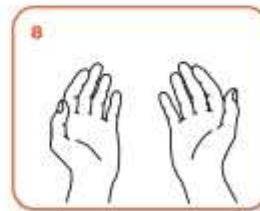
Rub the fingers against the opposite palm, keeping the fingers tightly together



Rub the left thumb rotationally tightly over the right palm and vice versa



Rub the left palm rotationally backwards and forwards with the fingers of the right hand held tightly together and vice versa



... once dry, your hands are safe.

WORLD ALLIANCE
for **PATIENT SAFETY**

WHO acknowledges the Hôpitaux Universitaires de Genève (HUG), in particular the members of the Infection Control Programme, for their active participation in developing this material.
October 2008, version 1



All illustrative photographs have been taken by the World Health Organization to verify the information contained in this document. However, the published material is being distributed without warranty of any kind, either expressed or implied. The responsibility for the interpretation and use of the material lies with the reader. It is recommended that the World Health Organization be held liable for damages arising from its use.

How to wash your hands with soap and water

WASH YOUR HANDS WITH SOAP AND WATER ONLY IF VISIBLY DIRTY!
OTHERWISE USE THE ALCOHOL-BASED SOLUTION.

The procedure takes 40–60 seconds



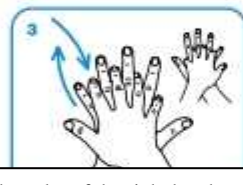
Wet your hands with water



Apply a quantity of soap sufficient to cover the entire surface area of the hands



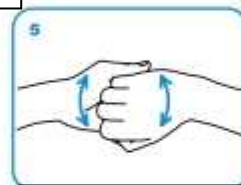
Rub the palms of your hands against one another.



Rub the palm of the right hand over the back of the left hand, intertwining the fingers with each other and vice versa.



Rub palm against palm, intertwining the fingers with each other



Rub the fingers against the opposite palm, keeping the fingers tightly together



Rub the left thumb rotationally tightly over the right palm and vice versa



Rub the left palm rotationally backwards and forwards with the fingers of the right hand held tightly together and vice versa



Rinse your hands with water



Dry carefully with a disposable paper towel



Use the paper towel to turn off the tap



... once dry, your hands are safe.

WORLD ALLIANCE
for **PATIENT SAFETY**

WHO acknowledges the Hôpital Universitaire de Genève (HUG), in particular the members of the Infection Control Programme, for their active participation in developing this material.
October 2010, version 1

 **World Health Organization**

All reasonable precautions have been taken by the World Health Organization to verify the information contained in this document. However, the published material is being distributed without liability of any kind, either expressed or implied. The responsibility for the interpretation and use of the material lies with the reader. We do not accept the World Health Organization be liable for damages arising from its use.

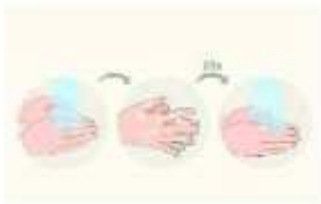
How to wear a surgical mask

Instructions to follow regarding how to put on and take off the mask are given below:

- Before putting on the mask, wash your hands carefully with soap and water or with an alcohol-based solution;
- Put on the facemask making sure that it adheres well to the face, covering the mouth and nose;
- Fasten the mask behind the ears/head with the relative loops, ties or bands, tightening them if necessary;
- Avoid touching the mask while wearing it; if you touch it, wash your hands;
- Carefully wash your hands before removing the mask;
- Remove the mask with caution, holding it by the loops or ties or bands or by the interior part without touching the front part, and discard it immediately in a closed bag;
- Dispose of the closed bag into the unsorted waste bin;
- Wash your hands carefully.

PUTTING ON THE MASK

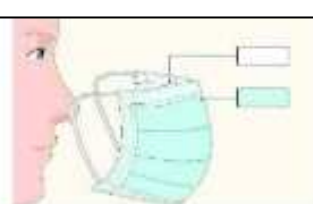
1. Wash your hands carefully



2. Put the mask the right way up



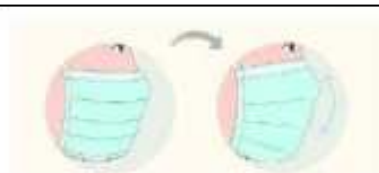
3. Make sure that the correct side of the mask is facing outwards



4. Fasten/tie the mask behind the ears/head

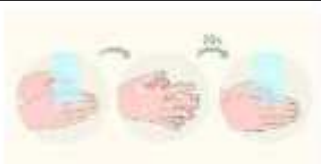


5. Position the mask over the nose and under the chin



REMOVING THE MASK

1. Wash your hands carefully



2. Remove the mask with caution and discard it in a closed bag into the unsorted waste bin



3. Wash your hands once more.

